

# The 4 Villages Magazine

## February 2023



**GreatYeldham, LittleYeldham,  
Tilbury Juxta-Clare, Ovington**



## R Groom Plumbing & Heating Engineers

- Boiler Installation & Replacement
- Complete Central Heating Installations
- Unvented Cylinder Installations
- Cylinder Replacements
- System upgrades
- Boiler servicing & breakdowns
- Complete Bathroom Installations

“Call Now For A Free No  
Obligation Quote”  
[rgroomplumbing.co.uk](http://rgroomplumbing.co.uk)

Richard: 07507157645

Email: [rgroom04@gmail.com](mailto:rgroom04@gmail.com)

Adam: 07590263613



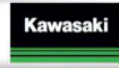
## ESSEX MOTORCYCLE BUYERS

We buy all Motorcycles, Mopeds  
Scooters, British Motorcycles,  
Barn Finds or Parts

LOOK IN YOUR SHEDS, GARAGES, GARDENS

Boxes of Parts Wanted

Call Darren : 07775 998628



# AD

## FUEL OILS LTD.

Your local answer!

NOW  
SELLING  
LPG AND  
AdBlue®

Commercial and general public  
welcome with easy access for all cars and vans

Yard sales from A D Fuel Oils Ltd

Banters Lane, Great Leighs, Nr. Chelmsford, Essex CM3 1QX

Opening Hours: Monday-Friday: 8am - 5pm, Saturday: 8am - 1pm

01245 362616 • [www.adfueloils.co.uk](http://www.adfueloils.co.uk)

Products available  
for collection or  
delivery:

- Petrol
- Diesel
- Kerosene
- Gas Oil/  
Red Diesel
- PBO
- Parafin
- AdBlue
- LPG
- 20 Litre  
Containers
- 205 Litre  
Containers
- Barrel  
Dispensers
- Rotary Pumps
- Boiler Additive  
(Additive For Aga's)

CARDS AND CASH  
ACCEPTED

**!! GOOD NEWS !!**

## **Great Yeldham Village Hub**

**The Village Hub has now Re-opened.  
Every Monday from 10.00 am to 12 noon  
in the Reading Room.**

**Everyone welcome:**

- **Enjoy hot beverages/soup and a roll**
- **Chat to friends and neighbours**
- **Take part in table games**
- **Access Post Office Services**
- **Access the Prescription Collection Service**

**If you live in the Great Yeldham area and are a patient with Hedingham Medical Centre, you can, from Monday January 16th, collect your prescription from the hub. Consent forms are available now from the Hedingham Medical Centre, from the pop-up Post Office or the Parish Council website at:**

**<https://greatyeldhampc.co.uk/notices/great-yeldham-prescription-collection-service/>**

**Please return completed forms to Hedingham Medical Centre.**



## GREAT YELDHAM COTTAGE GARDEN SOCIETY

Well here we are in February already with not a clue as to what the weather will be doing from one day to the next. On nice days there are always jobs to be doing in the garden such as cutting back any perennials still standing after winter; pruning late flowering clematis and moving any shrubs whilst dormant. On inclement days, greenhouses can be tidied, spring containers can be potted up and seeds can be planted and started off indoors.

Turning to your diaries now, please make a note of these dates: Sunday April 2<sup>nd</sup> - Guided tour of the National Stud at Newmarket. This was planned for 2020 but obviously had to be cancelled. We shall meet at Wavertree's Coffee Shop at 11am for tea/coffee and biscuits so you will have to make your own way to Newmarket before embarking on a 90 minute guided tour via minibus of the National Stud. Hopefully we will see mares with their young foals, yearlings and stallions all in the truly beautiful grounds of the National Stud. On your guided tour you will also hear about the history of the stud, and an overview of the work that goes into producing the future champions of the turf. Tickets are £15 for members or £17.50 for non members. Please email me to reserve your tickets.

Saturday 13<sup>th</sup> May will be our annual plant sale so hold off on buying your own bedding plants or shrubs as we will have a great selection at favourable prices.

On Sunday 23<sup>rd</sup> July we have a coach trip to RHS Garden Wisley. As an affiliated society to the RHS we are able to arrange a group visit once a year to include a 60 minute guided tour of the gardens upon arrival. RHS Wisley was founded more than 100 years ago. Its 240 acres are hugely diverse, with a range of garden styles and planting schemes. It is home to one of the largest plant collections in the world and includes many cultivated plants of national significance. With experimental planting schemes providing year-round inspiration, Wisley is a great day out for groups and offers a beautiful and relaxing experience at any time of year. You will see the majestic beauty of the Glasshouse, explore the stunning Rock Garden and stroll through the extravagant Mixed Borders.

The Annual Show will be held on Saturday 2<sup>nd</sup> September so hopefully this year will be a bit easier for the grower's amongst us. Watch this space each month for a sneak preview of this year's classes.

Jo Williams (joannacwilliams@btinternet.com)



**GREAT YELDHAM COTTAGE GARDEN SOCIETY**

**presents a**

**GUIDED TOUR OF  
THE NATIONAL STUD  
NEWMARKET**

**SUNDAY 2<sup>ND</sup> APRIL 2023**

**11am at WAVERTREE COFFEE SHOP, CB8 OXE for coffee & biscuits  
prior to the 90 minute minibus tour**

**Expect to see mares with their young foals, yearlings and stallions  
and hear about the history of the stud.**

**Make your own way there please.**



**Tickets: £15 CGS members: £17.50 non members**

**Email [joannacwilliams@btinternet.com](mailto:joannacwilliams@btinternet.com) or ring 07970240037  
to reserve your ticket. Places are limited so don't delay!  
Payment in advance please**

# **LITTLE YELDHAM VILLAGE HALL**

**INVITES YOU TO A SOCIAL EVENING AND TALK**

**ON FRIDAY 3<sup>RD</sup> MARCH 2023**

**FROM 7.00PM TO 10.00PM**

**ASHLEY COOPER, OUR WELL KNOWN LOCAL AUTHOR,  
HISTORIAN AND FARMER, WILL GIVE A TALK ON  
HEROES & VILLIANS OF THE ESSEX/SUFFOLK BORDER**

**CHEESE AND BISCUITS AND SNACKS PROVIDED**

**LICENCED BAR AND RAFFLE**

**IT WILL BE A RELAXED SOCIAL EVENING AND A CHANCE  
TO MEET UP WITH NEIGHBOURS AND FRIENDS AND  
HEAR ABOUT NOTABLE FIGURES IN OUR AREA**

**TICKETS AVAILABLE IN ADVANCE ONLY**

**@ £6 PER PERSON FROM:**

**North End - Sue - [bookings.lvillagehall@gmail.com](mailto:bookings.lvillagehall@gmail.com)**

**Church Green - Rachel - [rachpink12@hotmail.com](mailto:rachpink12@hotmail.com)**

**Little Yeldham, Tilbury Juxta Clare & Ovington -**

**Mary - [events.lvillagehall@gmail.com](mailto:events.lvillagehall@gmail.com)**

**Not on email? - call 07905 668852**

# **YELDHAM & DISTRICT LADIES CLUB**

## **PROGRAMME 2023**

**26<sup>th</sup> January - Paula Short – La Veuve Clicquot (The Woman behind the Wine)**

**23<sup>rd</sup> February – Sophie Ede – Hearing Help in Essex**

**30<sup>th</sup> March – A.G.M. followed by David Caulfield. The Semi-Pro Sixties – A musician's classic (and often hilarious) journey.**

**27<sup>th</sup> April – Bryan Thurlow – Maria Marten and the Red Barn.**

**25<sup>th</sup> May – Steve Lester – That's a Wrap – lifting the lid on the 'smoke and mirrors' of Luvvieland.**

**29<sup>th</sup> June – Niall Dickinson – Arsenic's Toxic Legacy.**

**27<sup>th</sup> July - Alex Mair – Crime Scene Search (Silent Witness).**

**31<sup>st</sup> August – Joanne Bealer – Demonstration from the Flower House.**

**28<sup>th</sup> September – Geoff Heathcote – The work of the R.N.L.I.**

**26<sup>th</sup> October – Georgina Burr – Gentle Exercise.**

**30<sup>th</sup> November – Amanda Sutherland – Make Do and Mend.**

**December – Christmas Lunch (members only) tbc.**

**Guests always welcome unless it states 'Members Only'.**

**Unless otherwise stated all meetings are held in the Gt.Yeldhan Reading Room and start at 7.30pm until 9.30pm.**



**D DEBNAM**

**"SOLID FUEL DELIVERED TO YOUR DOOR"  
FREE DELIVERY**

**NON SMOKELESS FUEL**

HOUSE COAL LARGE PREMIUM COBBLES £23.00 50KGS  
HOUSE COAL DOUBLES £18.00 50KGS

**SMOKELESS & PREPACKED AVAILABLE**

NEW HEAT £23.50 50KGS  
NEWHEAT £9.50 20KGS

HOME FLAME £20.50 50KGS  
HOME FLAME £8.50 20KGS

BRITE FLAME 22.00 50KGS  
BRITE FLAME £9.00 20KGS

HOMEFIRE OVALS £26.50 50KGS  
HOMEFIRE OVALS £13.25 25KGS

ANTHRACITE GRAINS £19.50 50KGS

HOUSE COAL DOUBLES £7.50 20KGS

ANTHRACITE STOVE NUTS £21.50 50KGS

***PLEASE CONTACT US ON THE BELOW FOR FURTHER INFO OR  
TO PLACE AN ORDER;***

**TEL: 01440706131/07830904493**

**EMAIL: [Ddebnam3@aol.com](mailto:Ddebnam3@aol.com)**

**Price match guarantee**



**'Security Management, Fire Services and Drone Survey Specialists'**

Syigma provide the following services to both Business & Domestic customers:-

**SECURITY**

CCTV  
Access Control  
Intruder Alarms  
Perimeter Security  
Data Network Services  
Remote Monitoring  
Service & Maintenance

**FIRE**

Fire Risk Assessments  
Fire Detection Systems  
Fire Suppression Systems  
Emergency Lighting  
Service and Maintenance

**DRONES**

Thermal Imaging Solutions  
Building Survey &  
Inspections  
Water Leak Detection  
4K Aerial Filming &  
Photography  
Promotional Videos  
Area's with Access Issues

Call now for your **FREE** initial site survey on **0800 043 6728**

or email [info@sygmasecurity.co.uk](mailto:info@sygmasecurity.co.uk)

[www.sygmasecurity.co.uk](http://www.sygmasecurity.co.uk)

**\* Syigma Security Systems Ltd - Syigma Fire Services Ltd \***

Unit K Blois Meadow Business Centre Steeple Bumpstead Suffolk CB9 7BN

## **St Andrews Café**

The monthly café, run in partnership with St Andrews Church in Great Yeldham, first opened in September 2021. The purpose of the café is to provide a regular space for people in the village and surrounding areas to connect and catch up with friends (and relatives in some cases!) where contact may be infrequent or may have been lost altogether. We are delighted that the café has proved to be so popular and that we have been able to establish the café as a regular event to look forward to now for so many people.

The café is run by volunteers who provide refreshments and bake in advance, to ensure that there is a good selection of cakes and biscuits available. We have also been able to organise transport, where necessary, for those who are unable to get along to the café by themselves. Everyone is very welcome to come along – our youngest visitor was only a few weeks old, and the oldest now well in to their 90s! The café takes place in St Andrews Church and the dates for the rest of the year are set out below.

Please make a note of the dates and do come along when you can. (Please note that there are two cafés in March but there will not be one in April or August).

The café is open on each date from 10.00am to 11.30am.

2nd February

23rd March

8th June

7th September

9th November

2nd March

4th May

6th July

5th October

7th December

**We look forward to seeing you soon!**



Hi everyone, Happy New Year, We are on the home straight!

We would like to thank all those who came along to support our open day in December. It was lovely to see you all. You gave us a lot of great feedback and lots of ideas and we have a really good foundation of people interested in becoming members.

After a bit of a lull over the Christmas break we are now working hard on completing the conversion. We will be adding the electrics and building the workbenches and sourcing our power supply. We have had a couple of hurdles to get over, but the Parish Council have been very supportive (as always) and helped us to navigate a path through them. The Men's Shed committee are busy dealing with the organisation needed to make sure we have covered all aspects of Risk Assessment, Health and Safety and a New Member Induction process.

Once we have the workbenches in place we will invite any interested parties to come along to help us sort out, clean and place the tools within the workshop. Please contact me if you are interested in helping

We have several people to thank for their contributions towards the shed and to add to the Roll of Honour. This month: Tracy and Pete Wigmore, Mrs Davidson, Peter Mitchell, Mark and Sarah Sutton, Martin and Sam Dowding and the Essex Shed Network – **Thank you All.**

We are looking out for; a Sewing machine, Chess Set, Dominoes, Scrabble and crafting materials as well as the usual Ironmongery.

Please remember to join our Facebook group for the latest news and updates. Simply search for Great Yeldham Men's Shed or type in <https://www.facebook.com/groups/482066230422000>

Or you can contact me direct on: M: 07576 757350 or  
E: Mail [martinkdowding@gmail.com](mailto:martinkdowding@gmail.com).



## What you need to know for local elections in May 2023.

If you're looking to vote in May's local elections, there is some important information you need to know.

To vote in the local elections this May 2023 at a polling station or by proxy, you will need to show **PHOTO ID**. This is a **NEW** requirement, introduced by the UK Government's Elections Act which was passed last year and comes into effect for the first time this May.

Here is where you can check if your ID is accepted:

<https://www.electoralcommission.org.uk/i-am-a/voter/voter-id/accepted-forms-photo-id>

No ID? You will need to apply for a free Voter Authority Certificate. This is a free photographic identification document specific for the purposes of voting provided by the Government. It is important to note that you only need to apply for the Voter Authority Certificate if you **DO NOT** have any of the accepted photo ID's. The application process for the Voter Authority Certificate will be managed through the GOV.UK website. More details here:

<https://www.electoralcommission.org.uk/i-am-a/voter/voter-id/applying-a-voter-authority-certificate> Currently the application process has not yet opened but we will update you as soon as this becomes available. Voters who do not produce a Voter Authority Certificate, or valid Photo ID will not be allowed to vote on the day. What about postal and proxy votes? Postal voters will not be affected and will be issued with their postal ballot papers as usual. If you choose to vote by proxy then the person who you have trusted to vote on your behalf will have to take their own photo ID or Voter Authority Certificate to the relevant polling station in order to be issued with a ballot paper. If you have any questions at all, our Elections team are here to help & assist you. You can contact them by emailing [elections@braintree.gov.uk](mailto:elections@braintree.gov.uk) or calling 01376 552525. We also have all the details about the Braintree district local elections and Voter ID on our website here: [www.braintree.gov.uk/elections](http://www.braintree.gov.uk/elections)

## Church News

### **Inspirational stories**

I came across the story of Jessica Cox recently. She was born in Arizona in 1983 and due to a rare birth defect, she was born without arms. Despite that challenge she's gone on to achieve some incredible goals. She's become the first armless person in the world to be licensed as a pilot. She's also earned a black-belt in Taekwondo, she can surf, scuba-dive and she's a motivational speaker.

I find her story so inspiring as I head deeper into 2023. It reminds me of the apostle Paul writing of how he sensed God saying to him: "My grace is sufficient for you, for my power is made perfect in weakness."

It won't be long before our local churches begin the Lenten journey towards Easter once more. As we do that, we'll be able to share our own stories with one another of facing challenges and seeking to live life in all its fulness. As always, you're so welcome to join us as we travel through Lent to Easter Day when we celebrate, once more, Jesus' resurrection from the dead.

God bless you

Justin

## Heddinghams & Upper Colne Benefice Services - February 2023

		Sible Heddingham	Castle Heddingham	
5th	11:00	Family Communion (CW)	9:30	Communion (CW)
12th	11:00	Communion (CW)	9:30	Communion (CW)
19th	11:00	Morning Prayer	9:30	Morning Prayer
26th	11:00	Communion (CW)	16:00	Evening Prayer (BCP)

		Great Yeldham	Little Yeldham	
5th	11:00	Family Communion (CW)	9:30	Communion (CW)
12th	11:00	Family worship	9:30	Morning Prayer
19th	11:00	Family Communion (CW)	9:30	Communion (CW)
26th	11:00	Family worship		Service at Tilbury-juxta-Clare

		Toppesfield	Stambourne	
5th	11:00	Morning Prayer	9:30	Morning Prayer
12th	11:00	Communion (CW)	9:30	Communion (CW)
19th	11:00	Morning Prayer		
26th	11:00	Communion (CW)		

		Tilbury-juxta-Clare	
5th			
12th			
19th			
26th	9:30	Communion (CW)	

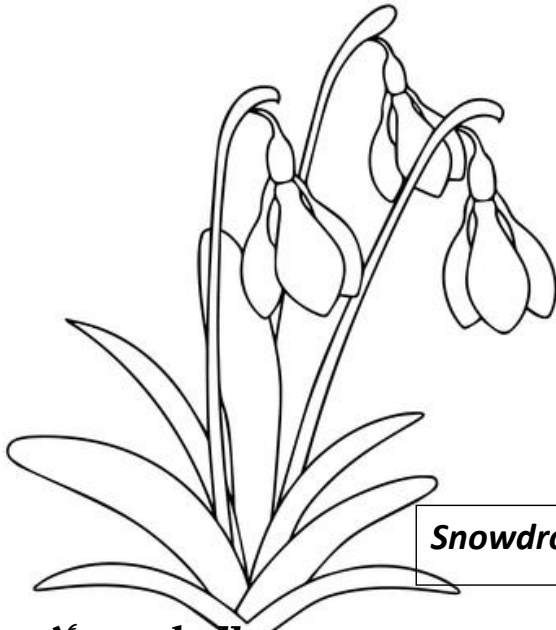


See our website  
for latest news, services  
Special Events  
and 'contact us' details at  
[www.heddingham.info](http://www.heddingham.info)



# Kids Page

**Fun Fact:** Snowdrops are often the first sign of spring in this part of the world.



*Snowdrops*

Have you seen any yet!?

How about these other Spring flowers?

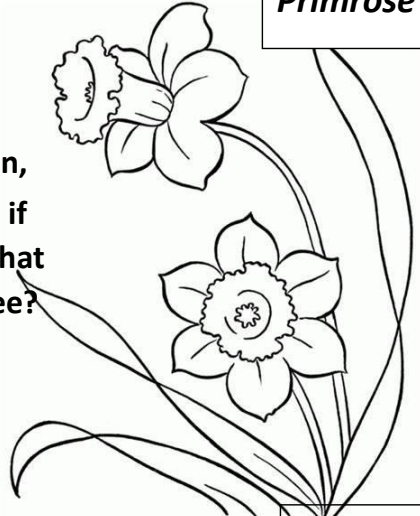


*Primrose*

**Your challenge:** Colour these in. Then, on your next walk around the villages, see if you can spot 5 different spring flowers! What other signs that Spring is coming do you see?



*Crocus*



*Daffodils*

😊 Have fun!



## **GREAT YELDHAM CARPET BOWLS CLUB**

Hello again. We at the Bowls Club hope you all had a lovely Christmas and New Year and have started 2023 with new intentions and resolutions, even though you might already have broken a few.

Our intention for 2023, is to build up membership of the club, to enable us to once again join the league and represent the club at matches and friendly games.

Practice games are held at the Reading Room on a Tuesday evening between 7.00pm and 9.30pm.

Please come along and meet us, you never know there might be a budding David Bryant amongst you.

For more information, please contact Margaret, on 01787 237049

## **GREAT YELDHAM TABLE TENNIS CLUB**

The club, although not officially formed yet, is growing all the time. We now have 21 potential members and although as yet, we haven't laid bat to ball, the enthusiasm is there for all to see.

### **Where we are at:**

We have had one new table delivered to the Reading Room, along with bats and balls and the second table, which the Parish Council have kindly agreed to pay for, has been ordered and hopefully will be us within a couple of weeks. One of our group has offered a third table, which he doesn't use and hopefully by the time you read this article, we will have it at the Reading Room.

### **What's next:**

A meeting will be called where we can all meet and introduce ourselves. A formal club will have to be formed and we will be looking for 1. Chairman/woman 2. Treasurer 3. Secretary.

That's all for now folks. Please watch this magazine for updates.

For more information, please contact John, on 04776328628

**IMPORTANT INFORMATION – PLEASE KEEP**



# RETURNS ON SUNDAY 28 MAY 2023

RideLondon–Essex, the world’s greatest festival of cycling, is returning to Essex on Sunday 28 May 2023, and we want to help you plan for the day.

The event will showcase the county on an international level, increase tourism opportunities, inspire thousands of people to be active and raise millions of pounds for charity.

Around 25,000 riders will start in central London and travel through Essex towns, villages and countryside before returning to the capital on 60-mile and 100-mile routes.

Working in partnership, Essex County Council and event organisers London Marathon Events are engaging with residents, communities, businesses and partners to ensure the event builds on the success of last year.

**For more information about the event, please visit [ridelondon.co.uk/community-info](https://ridelondon.co.uk/community-info)**



**Scan the QR code for more information**

## **The 2023 route**

The 2023 RideLondon–Essex event will follow the same route as 2022, but we’ve made improvements based on extensive feedback from residents, businesses and communities. To ensure the event is safe, there will be road closures on Sunday 28 May in some areas of Essex and central and east London.

Community engagement sessions will continue in 2023, and by March we’ll share information leaflets giving full details of the closures and how local access will operate in your area. For more information, please visit [ridelondon.co.uk/community-info](https://ridelondon.co.uk/community-info)

## **Charity fundraising**

Participants have raised more than £80 million for charity at the event since it was first held in 2013 and, with your support, we hope to raise even more in 2023.

## **Get in touch**

You can contact RideLondon via [ridelondon.co.uk/community-info](https://ridelondon.co.uk/community-info) and:  
Customer Services  
RideLondon  
190 Great Dover Street  
London SE1 4YB

**Find out more visit [ridelondon.co.uk](https://ridelondon.co.uk)**





**01787 383103**

07956 665272 / 07506 614193



**FAMILY RUN COMPANY WITH 40 YEARS EXPERIENCE**

**DOMESTIC &  
COMMERCIAL  
DRAINAGE**

**SERVICES INCLUDE**

- SEWAGE TREATMENT PLANTS & SEPTIC TANKS
- 24 HOUR EMERGENCY SERVICE
- BLOCKAGE CLEARANCE
- CCTV SURVEYS
- DRAINAGE EXCAVATIONS
- DRAIN DESCALING & ROOT REMOVAL
- WATER MAIN REPAIR & INSTALLATION



[www.ashenviro ltd.co.uk](http://www.ashenviro ltd.co.uk)



[ashenviro ltd@gmail.com](mailto:ashenviro ltd@gmail.com)



[www.ardmorevets.co.uk](http://www.ardmorevets.co.uk)

***Experienced caring Professional service for all your pets***

Consultation by appointment

Open all day for advice, prescriptions, over the counter service and  
Health/nurse clinic

Main Surgery  
57, Cornard Road,  
Sudbury, Suffolk  
(01787 372588)

Local Surgery  
1 Bridge Street  
Great Yeldham  
(01787) 238255

***24 Hour Emergency Service 07836 723934***



## THE AUDIOLOGY EXPERT

— STAY CONNECTED TO LIFE —

### Our Expert

Keyla has over 10 years experience as an Audiologist and Hearing Aid Consultant, she offers her patients a personalised service which is tailored to their needs.

Having worked for Imperial College NHS Trust in London and some of the biggest audiology high street brands in the UK, Keyla has the knowledge and clinical experience to deliver the best possible care to each of her patients.



### Our Services

Everything we do is designed for your individual care

-  **Hearing Evaluations**
-  **Ear wax removal**
-  **Tinnitus consultation**
-  **Full Line Of Hearing Aids**
-  **Hearing Aids Accessories**
-  **Aftercare packages**
-  **Follow Up Services**

To schedule a consultation

Phone: 07508 252291

Email: [keyla@audiologyexpert.co.uk](mailto:keyla@audiologyexpert.co.uk)

[www.theaudiologyexpert.co.uk](http://www.theaudiologyexpert.co.uk)

Great location in our brand-new state of the art facilities with free on-site parking and a fantastic Cafe  
Haverhill Research Park, The Epicentre, Enterprise Way, Haverhill, CB9 7LR

## J B Plumbing

### Reliable Local Plumber

Fully Qualified and Insured



- All plumbing work
- 24/7 call out
- Cylinders
- Free quotations
- Kitchens and bathrooms
- Under floor heating
- Central heating
- Repairs & servicing

James – 07984422242

E-mail – [JBPlumbing77@gmail.com](mailto:JBPlumbing77@gmail.com)



**YOUR LOCAL TIMBER & LANDSCAPING SUPPLIER**

**GROUND REINFORCEMENT  
(GRIDS & MESH)**



**STONES, CHIPPINGS &  
GABIONS**



**HANDMADE FENCE  
PANELS**



**RAILWAY SLEEPERS  
& DECKING**



**High Quality,  
Low Prices**



**Thousands of  
Products**



**Rated 4.6 ★  
by Customers**



**Same-Day  
Click & Collect**



**CALL OR EMAIL US FOR A QUOTE  
VIEW MORE PRODUCTS ONLINE**



01376 503869



sales@sure-green.com



www.sure-green.com



www.facebook.com/suregreenltd



www.instagram.com/suregreenltd/



www.linkedin.com/company/suregreenltd

Suregreen Ltd  
Viridis House  
Toppesfield Road  
Finchingfield  
Essex  
CM7 4NZ

## The 4 Villages Magazine

If you would like to include any articles or local information in the magazine, or if you would like to place an advert, please contact the editor John at:

The4villagesmagazine@gmail.com

### Advertising Fees for 2022/2023 - 10 editions

#### **Black and White**

¼ page - £81.60      ½ page - £148.80      Full page - £294.00

#### **Colour**

¼ page - £145.20      ½ page - £266.40      Full page - £532.80

## Great Yeldham Reading Rooms

Good sized hall with stage and use of rear garden area.

Perfectly suitable for parties, meetings, groups, clubs, events, quizzes and fundraisers, wedding receptions, etc.

Full use of tables and padded chairs, plus well-equipped kitchen.

**£8 per hour – Yeldham residents**

**£13 per hour – non-Yeldham residents**

To view the hall availability, please visit –

<https://greatyeldhamreadingroom.org.uk/> Events Calendar

or contact John for bookings on – 01787 238297 or email  
john.gyrrclerk@gmail.com

**Conditions of hire apply and deposit required.**

**All hirings are at the discretion of the Management Committee.**



**Harvey Darke**

FUNERAL SERVICE

New Office & Chapel:  
**ALEXANDRA HOUSE  
SWAN STREET  
SIBLE HEDINGHAM**



24 Hour  
Personal Service  
**01787 461138**

Memorials  
Pre-payment plans

**SARAH SUTTON FMAAT**  
ACCOUNTANCY SERVICES



Great Yeldham based accountant providing  
a wide range of accountancy services at an  
affordable price.

- Sole Trader and Limited Company Accounts
- Self Assessment Tax Returns
- Corporation Tax Returns
- Limited Company Start-ups
- Book-Keeping Services
- VAT Returns
- Payroll and CIS

**01787 236116**

[Sarah.J.Sutton@BTinternet.com](mailto:Sarah.J.Sutton@BTinternet.com)

[www.SarahSuttonAccountancyServices.co.uk](http://www.SarahSuttonAccountancyServices.co.uk)

## **CLEMENTS CHIMNEY SERVICES**

**Levi Clements**

**Local chimney specialist**

**Including fitting of  
chimney pots,  
bird-guard  
cowlings, liners  
and sweeping**



***Please check our reviews***

**5.0 ★★★★★**

**07810 616837**

**[clementschimneyservices@outlook.com](mailto:clementschimneyservices@outlook.com)**

The views and opinions expressed in the 4 Villages Magazine, including those claims and opinions expressed in any advertisements, are independent of and do not necessarily reflect the views and opinions of the publishers. They cannot accept responsibility for the accuracy of the advertisers. Editorial material does not necessarily reflect the views and opinions of the publishers and neither editorial nor advertisements are to be read as recommended.

---

## PROVIDING CLARITY DURING UNCERTAINTY

The breakdown of any family relationship requires a carefully tailored approach to manage the complexity of the situation in a sensitive and practical manner.

Our experienced Family Solicitors can always be on hand to provide objective family law advice to you and your loved ones, at whichever stage of the process you find yourself.

- ✓ **Divorce & Financial Matters**
- ✓ **Civil Partnerships**
- ✓ **Property Disputes**
- ✓ **Disputes about children**
- ✓ **Domestic Violence**
- ✓ **Pre and Post Nuptial Agreements**
- ✓ **Cohabitation Agreements**
- ✓ **Separation Agreements**
- ✓ **Change of Name Deeds**
- ✓ **Child Abduction & Relocation**



### **Rosalyn Jacobs**

Family Law Solicitor

✉ [Rosalyn.Jacobs@ellisonssolicitors.com](mailto:Rosalyn.Jacobs@ellisonssolicitors.com)  
☎ 01284 763333

Rosalyn deals with all aspects of family law including divorce proceedings, financial settlements, cohabitation agreements, and a range of child related matters.



[www.ellisonssolicitors.com](http://www.ellisonssolicitors.com)

**BURY ST EDMUNDS | IPSWICH | COLCHESTER | CHELMSFORD | TENDRING**



# Little Yeldham Village Hall Hire

Ideal for family gatherings, parties, wedding receptions, band practices, fitness/dance classes etc.

Main hall seats 60 people.

Off-road parking, good quality padded chairs, tables, equipped kitchen, toilets, and baby-changing facilities.

**£7.50 per hour for residents of Little Yeldham and North End**

Commercial hire and non-local rates available.

The smaller John Gardiner room is also available for hire separately for up to 20 people or in addition to the main hall. Suitable for consulting/business meetings, smaller family gatherings etc.

Toilet facilities, sink, hot water, and tea/coffee making facilities.

**Tables and chairs for outside hire are available.**

**Games package available for outside hire.**

Games include, Jumbo Jenga, Splat the Rat, Jumbo Connect 4 plus more!

Rates for hiring the John Gardiner room, tables/chairs and games are available on request.

Please contact: [bookings.lyvillagehall@gmail.com](mailto:bookings.lyvillagehall@gmail.com)

Visit our Facebook page @littleyeldhamvillagehall for more information,  
like and follow us for upcoming events.

All hiring at discretion of management committee. Conditions of hire apply.



**Acorns Pre-School Ltd**

**Tel: 01787 237684**

[acornspreschool@hotmail.co.uk](mailto:acornspreschool@hotmail.co.uk)

Church Road

Great Yeldham

CO9 4PT

Now offering afternoon sessions

For enquiries, please contact Sophie

Registered Company No.

0719936



**Kid's Ballet & Street Dance** **Adult's Fitness**

**SOPHIA'S DANCE**  
MOVEMENT & EXERCISE

**s.allendance@yahoo.com**  
**07938 520 672**

FIND US ON  
FACEBOOK

Lance Turner Dipwcf  
- Local Farrier



Tel: 07949232360

## GLENDA WOOD

Ad Dip Psych C, Cert Hyp CS

### Counsellor & Hypnotherapist

*Life is often not as straight forward as we may hope but, however long the road, there is always a way ahead.*

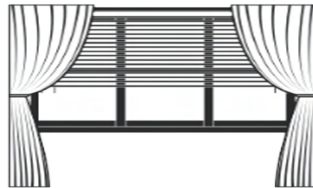
I am fully qualified & offer confidential support in a safe environment.

Practices in Great Yeldham & Clare

Call 07421 710775

[info@glendawood.co.uk](mailto:info@glendawood.co.uk)

[www.glendawood.co.uk](http://www.glendawood.co.uk)



BESPOKE BLINDS  
AND CURTAINS  
— LONG MELFORD —

**HERE FOR ALL YOUR WINDOW  
DRESSING REQUIREMENTS**

**FREE, NO OBLIGATION HOME  
CONSULTATIONS AVAILABLE**

**SHOP SMALL - SUPPORT LOCAL**

01787 371387

[info@bespokeblindslm.co.uk](mailto:info@bespokeblindslm.co.uk)

Located next to the Co-Op in Long Melford

[www.bespokeblindslm.co.uk](http://www.bespokeblindslm.co.uk)

## Dentist

### Paul Rolfe BDS

Veneers & Crowns  
in a single visit  
Dental Implants  
Family Dentistry

Lavenham &  
Long Melford

**01787 882722**

[www.paulrolfedental.co.uk](http://www.paulrolfedental.co.uk)

## DARKINS SUPPLY STORE

122 Swan Street  
Sible Hedingham  
Phone: 01787 462536  
Open Mon - Sat 8.00 am-5-30 pm

**PAINT  
DECORATING  
SUNDRIES  
IRON MONGERY  
PET FOOD  
GARDEN WARES  
HARDWARE  
ELECTRICAL & PLUMBING  
KEY CUTTING  
AGENTS FOR DRY CLEANING**

Email: [info@darkins.co.uk](mailto:info@darkins.co.uk)  
[www.darkinssupplystores.co.uk](http://www.darkinssupplystores.co.uk)

# Pest Defence

PEST CONTROL AND PREVENTION SERVICES

(Formerly PESTWISE LTD - est 1989)

**RATS MICE WASPS ANTS FLEAS BIRDS**  
**ALL OTHER PEST SPECIES DEALT WITH DISCREETLY, EFFICIENTLY  
AND ECONOMICALLY**

**For a no-obligation quote or just friendly advice  
call John**

**07808 262 576**

**01787 239 035**



# Paul the Sweep

Professional Chimney Sweep  
Wood Burners, Open Fires,  
Stoves, Boilers,  
Inglenook Fireplaces

Fully insured  
Certificates issued



**01787 258021**  
**07775 334272**



**SPECIALISTS  
IN ALL  
ASPECTS OF  
TREE CARE**  
FULLY INSURED

07850877828  
01787323505

arbor.elite@yahoo.com  
www.arbor-elite.co.uk

@arbor.elite



**DRAINS CLEARED**

**SEPTIC TANKS  
EMPTIED**

**For fast efficient service  
Phone  
Great Yeldham**

**01787237341**

**or**

**07890188276**



**Grooming**

Carried out by a fully insured, qualified and caring Canine beautician.

Call Michele on  
01787 238514 Or 07788804887  
Little Yeldham

## Great Yeldham Parish Council

The Parish Council meet the first Thursday of every month, except in January. All meetings start at 7.30pm in the Reading Rooms, High Street, Great Yeldham and are open to the public and press. There are 15 minutes available for public participation. Agenda and Minutes are published each month on the Parish Council's website and are placed on the notice board on the green at the North Street and Bridge Street junction.

**Website:** [www.greatyeldhampc.co.uk](http://www.greatyeldhampc.co.uk)

**Office:** The Reading Room, High Street, Gt Yeldham, CO9 4ER  
01787 237832

**Office hours:** Tuesday, Wednesday, Thursday 10.30 - 1.30pm  
There will be periods when the office is closed due to council business and annual leave but a message can be placed in the post box, sent by email or left on the answer phone.

**Chairman:** Mr P Rawlinson, Gt Yeldham 01787 237049

**Vice Chairman:** Mr J Marks, Gt Yeldham, 01787 238297

**Clerk and Responsible Finance Officer:**

Tracy Wigmore c/o The Reading Room, Gt Yeldham 01787 237832

**Councillors:**

Mrs G Burr, Gt Yeldham, [gburr.gypc@gmail.com](mailto:gburr.gypc@gmail.com)

Mrs A Burrows, Gt Yeldham 01787 237959

Mr P King, Gt Yeldham, 07391467541 [Phil.kinggypc@gmail.com](mailto:Phil.kinggypc@gmail.com)

Mr Bikaram Chahal, Gt Yeldham, [bsingh\\_gypc@outlook.com](mailto:bsingh_gypc@outlook.com)

Mr B Sargeant, Gt Yeldham 01787 236041

Mr G Theobald, Gt Yeldham [gtheobaldgypc@gmail.com](mailto:gtheobaldgypc@gmail.com) 07802252471

Mr M Lovell, Lt Yeldham. [markailovell@gmail.com](mailto:markailovell@gmail.com)

### Burial ground

(The Glades, The Lawn, Garden of Remembrance)

Tracy Wigmore,

c/o The Reading Room, Gt Yeldham 01787 237832



## HANDMADE CURTAINS & BLINDS, CLOTHING ALTERATIONS & REPAIRS

Please contact Jaquie on 07412 608344  
or email [enquiries@ninesaved.co.uk](mailto:enquiries@ninesaved.co.uk)

[www.ninesaved.co.uk](http://www.ninesaved.co.uk) f/ninesaved

Collections & deliveries can be arranged

Let us be your stitch in time...

Off mains sewers?  
Relying on a septic tank or  
sewage treatment plant?

Trust the experts to take care  
of your system.

With over 50 years of experience in wastewater  
treatment we'll keep your system running smoothly.

- Emptying & desludge
- Servicing
- Repairs
- Installation

£25 off

Quote  
SAE25

if you book your first service and empty with us



Celebrating over 30  
years installing

**Klargester**

Buying or selling a house? Ask us for details about our Home Buyer Drain Survey.

Call today to book your service or free site survey

01371 850537 [service@owlshall.co.uk](mailto:service@owlshall.co.uk) [www.owlshall.co.uk](http://www.owlshall.co.uk)

Roller Banners  
From £75

10,000 A5 Leaflets  
from £68

500 A5 Booklets  
24 Pages  
From £151

**Paul Clark Printing**  
L I M I T E D

Tel: 01787 469628 Mob: 07799 598970

Email: [sales@paulclarkprint.co.uk](mailto:sales@paulclarkprint.co.uk) Web: [www.paulclarkprint.co.uk](http://www.paulclarkprint.co.uk)  
Unit 7 Rippers Court, Sible Hedingham, Essex CO9 3PY



**Little Yeldham, Tilbury Juxta Clare and Ovington  
Parish Council**

Chairman: Mr Peter Gentry – [cllr.pgentry.ly.tjc.o.pc@gmail.com](mailto:cllr.pgentry.ly.tjc.o.pc@gmail.com)

Vice-Chairman: Mr Robert Nott – [cllr.rnott.ly.tjc.o.pc@gmail.com](mailto:cllr.rnott.ly.tjc.o.pc@gmail.com)

Clerk: Mr Adrian Corder-Birch, Rustlings, Howe Drive, Halstead CO9 2QL –  
[clerk.ly.tjc.o.pc@gmail.com](mailto:clerk.ly.tjc.o.pc@gmail.com)

Councillors:

Mrs Katie Chapman – [cllr.kchapman.ly.tjc.o.pc@gmail.com](mailto:cllr.kchapman.ly.tjc.o.pc@gmail.com)

Mrs Amanda Gardiner – [cllr.agardiner.ly.tjc.o.pc@gmail.com](mailto:cllr.agardiner.ly.tjc.o.pc@gmail.com)

Mrs Claudie Gray – [cllr.cgray.ly.tjc.o.pc@gmail.com](mailto:cllr.cgray.ly.tjc.o.pc@gmail.com)

Mr Anthony Osmond-Evans – [cllr.aosmondevans.ly.tjc.o.pc@gmail.com](mailto:cllr.aosmondevans.ly.tjc.o.pc@gmail.com)

Mrs Rosie Marsh – [cllr.rmarsh.ly.tjc.o.pc@gmail.com](mailto:cllr.rmarsh.ly.tjc.o.pc@gmail.com)

Mr Daren Patient – [cllr.dpatient.ly.tjc.o.pc@gmail.com](mailto:cllr.dpatient.ly.tjc.o.pc@gmail.com)

Mr Patrick Pawsey – [cllr.ppawsey.ly.tjc.o.pc@gmail.com](mailto:cllr.ppawsey.ly.tjc.o.pc@gmail.com)

Mrs Mary Pearce – [cllr.mpearce.ly.tjc.o.pc@gmail.com](mailto:cllr.mpearce.ly.tjc.o.pc@gmail.com)

Mr J Russell – [cllr.jrussell.ly.tjc.o.pc@gmail.com](mailto:cllr.jrussell.ly.tjc.o.pc@gmail.com)

Website: <https://e-voice.org.uk/little-yeldham-tilbury-juxta-clare-and-ovington-parish-council/>

Planning Applications:

The Parish Council refers planning applications relating to Little Yeldham to the Little Yeldham Planning Advisory Group who advise the Parish Council how to respond to the consultation request from Braintree District Council. For more information about the Little Yeldham Planning Advisory Group, who they are and how they operate, please visit the Planning page on the Parish Council website alternatively, contact Peter Gentry at: [.ly.tjc.ovington.parishcouncil@gmail.com](mailto:.ly.tjc.ovington.parishcouncil@gmail.com).

Planning applications relating to Tilbury Juxta Clare and Ovington, will be dealt with by their respective councillors.

## Useful numbers

### **Rev'd Justin Tomkins**

01787 237211 mail@justintomkins.org

**Rev 'd Liz Paxton** revlizpaxton@gmail.com

### **CHURCH WARDENS:**

#### **St. John the Baptist Little Yeldham**

Don Jenkins, Little Yeldham(237878)

#### **St. Margaret's Tilbury-Juxta-Clare**

Mr Terry Dean. Tel: 237256

Mr Nicholas Turner. Tel: 237997

#### **St. Mary's Ovington**

Fiona Slot and Stephen Norris (278123)

### **County Councillor: Peter Schweir**

cllr.peter.schwieir@essex.gov.uk 01787 46047

### **Braintree District Council, Yeldham Ward**

Richard Van Dulken, 07803 932737

Email cllr.rvandulken@braintree.gov.uk

### **Braintree District Councillor**

Mrs. I Parker,

01787 237246 Email cllr.iparker@braintree.gov.uk

**Braintree District Council** 01376 552525

### **Doctors:**

#### **Castle Surgery**

Castle Heddingham 01787 461465

#### **Hilton House Surgery**

Castle Heddingham Surgery 01787 461784

Sible Heddingham 01787 460612

**Vets:** Great Yeldham 01787 238255

# Your partner in divorce and separation

Speak to Carol Toulson, independently recognised as one of the leading Family Law solicitors in the region

Holmes & Hills provides a discounted initial appointment to advise on your options.

01787 475312 | Trinity Street, Halstead  
[www.holmes-hills.co.uk](http://www.holmes-hills.co.uk)



All aspects covered from  
**new builds**  
to existing re-skims

**Also traditional lime work**  
**Over 20 years' experience**

**07855 748428 or 01787  
238494**

## Choose us with Confidence

- Lovely Warm Private Pool
- Adult and Baby lessons
- Super Experienced Teachers
- Lessons for Pre School and School Age Children
- Covid Secure Environment for Your Safety
- Private Hire and Adult lessons also Available

Come and Join Us  
Spring Croft Stambourne CO9 4NT

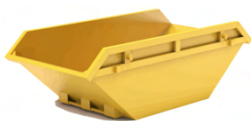
**01440 785806**

[www.swim4life.co.uk](http://www.swim4life.co.uk) • [admin@swim4life.co.uk](mailto:admin@swim4life.co.uk) • [Swim4Life.co.uk](http://Swim4Life.co.uk)



# CLEARWAYS

**2 YARD SKIP**



**ONLY  
£120**

**4 YARD SKIP**



**ONLY  
£200**

**6 YARD SKIP**



**ONLY  
£235**

**GROUP LTD  
SKIP HIRE**

**COMMERCIAL WASTE  
BUILDERS WASTE  
WEEKLY COLLECTION  
GARDEN CLEARANCE  
OFFICE CLEARANCE  
SAME DAY SERVICE  
WAIT & LOAD SERVICE  
HOUSE CLEARANCE  
DOMESTIC WASTE**

**COMPETITIVE PRICES  
NO HIDDEN COSTS  
FULLY LICENSED  
FULLY INSURED**

**SKIP BAGS FOR SMALLER LOADS**



**£60**

**RUBBLE  
CONCRETE**



**£60**

**SOIL  
TURF**



**£50**

**GREEN  
WASTE**



**£70**

**GENERAL  
WASTE**

**YOU FILL, WE TAKE AWAY**

**CALL FOR A FREE QUOTE  
07508 404714**

Waste Carriers License No: CBDU431778

**NOTE!** The following items must not go in to skips but can be taken away for extra charge: - Fridges/Freezers – Mattresses - Car Batteries - Tyres - Gas Canisters - Asbestos - Plaster Board